



81 Black Prince Road, London  
SE1

GARTONJONES.COM

81 Black Prince Road, London  
, SE1

GARTON JONES.COM

9 Albert  
Embankment  
London  
SE1 7SP

Lettings:  
+44 (0) 20 7735 1888  
nineelms@gartonjones.com  
www.gartonjones.com

£600 Per Week

A very spacious one-bedroom furnished apartment of 614sq.ft (57sq.m) in Parliament House. This luxury apartment offers an open-plan living of the highest standard and happens to be the largest one-bedroom apartment in the development. The property comprises an open-plan reception, modern integrated kitchen, luxury bathroom, spacious bedroom with fitted wardrobes and utility cupboard with great storage. Residents will also enjoy a concierge service, exclusive resident's gymnasium, designer interiors, bicycle storage and large communal outdoor terrace.

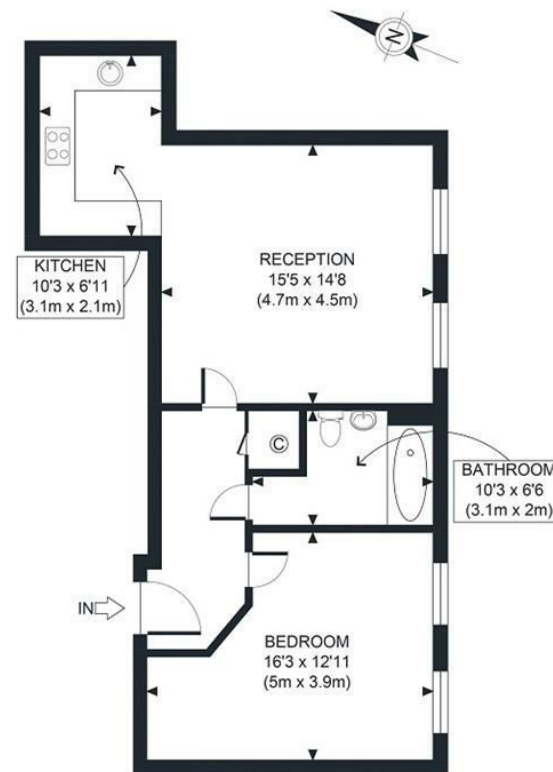
Parliament House is a 23-storey tower within easy reach of the excellent transport services of Vauxhall and London's trendy South Bank.

Disclaimer: Please note that this building is scheduled to undergo cladding remedial works in the near future. While every effort will be made to minimise inconvenience, potential disruption may occur during these works. Further details can be provided upon request.

- Electricity Supply — Mains | Water Supply — Mains | Sewerage — Mains | Heating — Central Heating
- Broadband & Mobile Signal : Check Coverage via Ofcom
- No Parking
- Lift Access
- Building Safety: EWS1 Available on Request
- Council Tax Band E (London Borough of Lambeth)
- 5 Week Security Deposit
- Holding deposit equivalent to 1 week of rent
- Rent to be payable monthly in advance
- EPC Rating C (79)

- 1 Bedroom
- 618sq.ft (57sq.m)
- Bathroom
- Open Plan Reception
- Modern Kitchen
- Good Storage
- Concierge
- Bicycle Storage
- Communal Terrace
- 0.6 Miles to Vauxhall Station






GROSS INTERNAL  
FLOOR AREA 618 SQ FT

APPROX. GROSS INTERNAL FLOOR AREA 618 SQ FT / 57 SQM

Ref:

Copyright **photoplan** 

Disclaimer: Floor plan measurements are approximate and are for illustrative purposes only.  
While we do not doubt the floor plan accuracy and completeness, you or your advisors should  
conduct a careful, independent investigation of the property in respect of monetary valuation

